

PARS

**PRODUCT
CATALOGUE**
ÜRÜN KATALOĐU

**YAVUZ
HOEING
MACHINES**



yavuz
ÇAPA MAKİNALARI

PARS

**NOW,
IT'S TIME FOR A
CHANGE...
ŞİMDİ DEĞİŞİM
ZAMANI...**



PARS





P A R S

PARS



SERIES
50

BİR İLERİ
ŞANZIMANLI
I FORWARD



III
SERIES
50
BİR İLERİ
ŞANZİMAN
1 FORWARD

PARS

Teknik Özellikler

Seri	:Yavuz 50
Şanzıman	:1 İleri Vitesli Elle Kumandalı
İş Geniştirliği	:Konik Ve Ayna Dişli İle Aktarmalı
Emniyet Sistemi	:50-80 Cm Ayarlanabilir (Koruyucu Yan Diskler İle) :Acil Durum Otomatik Motor Durdurma
Balata	:Tertibatlı :Yağ Banyolu : 3-50-4 : YAVUZ :4
Teker Takımı	:Zamanlı Kafadan Subaplı Tek Silindirli
Motor	
Motor Tipi	
İlk Hareket	
Silindir Hacmi (cm3)	
Net Güç	: İpli
Net Tork	:139 cc (65 X 42)
Motor Yağ Kapasitesi (lt)	:4.023 hp / 3600 d/dk
Yakıt Depo Kapasitesi (lt)	:1.26 Kg-M (12.4 N -M) @ 2500 d/dk
Yakıt Türü	:0,6 lt
Hava Filtresi	:1,6 lt
Soğutma Sistemi	:Kuruşunsuz Benzin
Ateşleme Sistemi	: Kuru
Ağırlık	:Cebri Hava İle :Transistörli Manyeto İle :40 kg

Technical Specifications

Serial No	:Yavuz 50
Transmission and Diff	:Manual 1 forward
Tiller / Working With	:Conical and Bevel Gear Box
Safety Device	:Adjustable 50-80cm (with the protective side disks) :Motor Stop shuts down the engine immediately :Synchronized with gear box :Oil bath
Power take Of	: 3-50-4 : Yavuz :4 Stroke Gasoline Engine : Rotor
Clutch	:139 cc (65 X 42) :4.023 HP / 3600 rpm :1.26 Kg-M (12.4 N -M) @ 2500 rpm :0,6 lt :1,6 lt : Gasoline
Wheels	:Semi-dry :Air
Engine	
Engine Type	
Starting System	
Cylinder Volume (cm3)	
Rated Power	
Rated Torque	
Engine oil capacity (ltr)	
Fuel tank capacity (ltr)	
Fuel Type	
Air Filter	
Cooling System	
Ignition System	
Weight	

: Transistor Ignition
:40 kg



|adripars.com

yavuz

PARS



SERIES
200

İKİ İLERİ BİR GERİ
ŞANZIMANLI
2 FORWARD and 1 REVERSE SPEED



III
SERIES

200

İKİ İLERİ BİR GERİ
ŞANZİMAN
2 FORWARD and 1 REVERSE SPEED

PARS

Teknik Özellikler

Seri	:Yavuz 200
Şanzıman	:2 İleri 1 Geri Vitesli Elle Kumandalı
Defransiyel	:Konik Ve Ayna Dişli İle Aktarmalı
İş Geniřliđi	:60-90 Cm Ayarlanabilir (Koruyucu Yan Diskler İle)
Emniyet Sistemi	:Acil Durum Otomatik Motor Durdurma Tertibatı
Kuyruk Mili	:İki Adet
Balata	:Üst Kuyruk Mili Motor Devri Alt Kuyruk Mili Vites Devri
Teker Takımı	:Kuru Tip Konik Balata / Yađlı Yaprak
Motor	:Opsiyonel (400 x 8)
Motor Tipi	: YAVUZ
İlk Hareket	:4 Zamanlı Kafadan Subaplı Tek Silindirli
Silindir Hacmi (cm3)	
Net Güç	: İpli
Net Tork	
Motor Yađ Kapasitesi (lt)	:212 (68.0 X 54.0) :7 Bg / 3600 d/dk
Yakıt Depo Kapasitesi (lt)	:1,26 Kg-M (12.4 N -M) @ 2500 d/dk
Yakıt Türü	:0,6 lt :3,6 lt :Kuruşunsuz Benzin :Yarı
Hava Filtresi	:Kuru - Yađ Banyolu - Çift Elemanlı
Soğutma Sistemi	:Cebri Hava İle :Transistörli Manyeto
Ateşleme Sistemi	İle :70 kg
Ađrılık	

Technical Specifications

Serial No	:Yavuz 200
Transmission and Diff	:Manual 2 forward and 1 reverse Speed
Tiller / Working With	:Conical and Bevel Gear Box
Safety Device	:Adjustable 60-90cm (with the protective side disks)
Power take Off	:Motor Stop shuts down the engine immediately
Clutch	:Upper: Fixed speed Lower: Synchronized with gear box
Wheels	:Conical dry type :Optional (400x8) : YAVUZ :4
Engine	Stroke Gasoline Engine : Ropc :212 (68.0 X 54.0) :7
Engine Type	HP / 3600 rpm :1,26 Kg-M (12.4 N -M) @ 2500 rpm
Starting System	:0,6 lt :3,6 lt : Gazoline :Semi-dry - Oil bath - double
Cylinder Volume (cm3)	component :Air
Rated Power	
Rated Torque	
Engine oil capacity (ltr)	
Fuel tank capacity (ltr)	
Fuel Type	
Air Filter	
Cooling System	
Ignition System	
Weight	

: Transistor Ignition
:70 kg



| adrinpars.com

yavuz

PARS

III
SERIES

200

İK İLERİ BİR GERİ
ŞANZİMAN
2 FORWARD and 1 REVERSE SPEED



Teknik Özellikler

Seri	:Yavuz 200 Honda GX200
Şanzıman	:2 İleri 1 Geri Vitesli Elle Kumandalı
İş Geniřliđi	:Konik Ve Ayna Diřli İle Aktarmalı
Emniyet Sistemi	:60-90 Cm Ayarlanabilir (Koruyucu Yan Diskler İle)
Kuyruk Mili	:Acil Durum Otomatik Motor Durdurma Tertibatı
Balata	:İki Adet
Teke Takımı	:Üst Kuyruk Mili Motor Devri Alt Kuyruk Mili Vites Devri
Motor	:Kuru Tip Konik Balata
Motor Tipi	:Opsiyonel (400 x 8)
İlk Hareket	
Silindir Hacmi (cm3)	:Honda GX200
Net Güç	:4 Zamanlı Kafadan Subaplı Tek Silindirli
Net Tork	
Motor Yađ Kapasitesi (lt): İpli	
Yakıt Depo Kapasitesi (lt)	:196 (68.0 X 54.0)
Yakıt Türü	:6.5 Dg / 3600 d/dk
Hava Filtresi	:1.26 Kg-M (12.4 N -M) @ 2500 d/dk
Sođutma Sistemi	:0,6 lt
Ateřleme Sistemi	:3,6 lt
Ađirlik	:Kuruşunsuz Benzin
	:Yan Kuru - Yađ Banyolu - Çift Elemanlı
	:Cebri Hava İle
	:Transistörlü Manyeto İle
	:70 kg

Technical Specifications

Serial No	:Yavuz 200 Honda GX200
Transmission and Diff	:Manual 2 forward and 1 reverse Speed
Tiller / Working With	:Conical and Bevel Gear Box
Safety Device	:Adjustable 60-90cm (with the protective side disks
Power take Of	:Motor Stop shuts down the engine immediately
Clutch	:Upper: Fixed speed Lower: Synchronized with gear
Wheels	box :Conical dry type :Optional (400x8) :Honda
Engine	GX200 :4 Stroke Gasoline Engine : Ropc :196 (68.0 X
Engine Type	54.0) :6.5 HP / 3600 rpm :1.26 Kg-M (12.4 N -M) @
Starting System	2500 rpm :0,6 lt :3,6 lt : Gazoline :Semi-dry - Oil bath
Cylinder Volume (cm3)	- double component :Air
Rated Power	
Rated Torque	
Engine oil capacity (ltr)	
Fuel tank capacity (ltr)	
Fuel Type	
Air Filter	
Cooling System	
Ignition System	
Weight	
	: Transistor Ignition
	:70 kg

HONDA
The Power of Dreams

adripars.com |



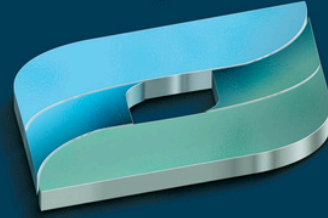
PARS

PARS



SERIES
300

ÜÇ İLERİ BİR GERİ
ŞANZIMANLI
3 FORWARD and 1 REVERSE SPEED



III
SERIES

300

ÜÇ İLERİ BİR GERİ
ŞANZİMAN
3 FORWARD and 1 REVERSE SPEED

Teknik Özellikler

Seri	:Yavuz 300
Şanzıman	:3 İleri 1 Geri Vitesli Elle Kumandalı
Defransiyel	:Konik Ve Ayna Dişli İle Aktarmalı
İş Geniřliđi	:60-90 Cm Ayarlanabilir (Koruyucu Yan Diskler İle)
Emniyet Sistemi	:Acil Durum Otomatik Motor Durdurma Tertibatı
Kuyruk Mili	:İki Adet
Balata	:Üst Kuyruk Mili Motor Devri Alt Kuyruk Mili Vites Devri
Teker Takımı	:Kuru Tip Konik Balata / Yađlı Yaprak
Motor	:Opsiyonel (400 x 8)
Motor Tipi	: YAVUZ
İlk Hareket	:4 Zamanlı Kafadan Subaplı Tek Silindirli
Silindir Hacmi (cm3)	
Net Güç	: İpli
Net Tork	
Motor Yađ Kapasitesi (lt)	:212 (68.0 X 54.0) :7 Bg / 3600 d/dk
Yakıt Depo Kapasitesi (lt)	:1.26 Kg-M (12.4 N -M) @ 2500 d/dk
Yakıt Türü	:0,6 lt :3,6 lt :Kuruşunsuz Benzin :Yarı
Hava Filtresi	:Kuru - Yađ Banyolu - Çift Elemanlı
Sođutma Sistemi	:Cebri Hava İle :Transistörli Manyeto
Ateřleme Sistemi	İle :75 kg
Ađrılık	

Technical Specifications

Serial No	:Yavuz 300
Transmission and Diff	:Manual 3 forward and 1 reverse Speed
Tiller / Working With	:Conical and Bevel Gear Box
Safety Device	:Adjustable 60-90cm (with the protective side disks)
Power take Of	:Motor Stop shuts down the engine immediately
Clutch	:Upper: Fixed speed Lower: Synchronizd with gear box
Wheels	:Conical dry type :Optional (400x8) : YAVUZ :4
Engine	Stroke Gasoline Engine : Ropc :212 (68.0 X 54.0) :7
Engine Type	HP / 3600 rpm :1.26 Kg-M (12.4 N -M) @ 2500 rpm
Starting System	:0,6 lt :3,6 lt : Gasoline :Semi-dry - Oil bath - double
Cylinder Volume (cm3)	component :Air
Rated Power	
Rated Torque	
Engine oil capacity (ltr)	
Fuel tank capacity (ltr)	
Fuel Type	
Air Filter	
Cooling System	
Ignition System	
Weight	

: Transistor Ignition
:75 kg

adripars.com

PARS



yavuz



Teknik Özellikler

Seri	:Yavuz 300 Honda GX200
Şanzıman	:3 İleri 1 Geri Vitesli Elle Kumandalı
İş Genişliği	:Konik Ve Ayna Dişli İle Aktarmalı
Emniyet Sistemi	:60-90 Cm Ayarlanabilir (Koruyucu Yan Diskler İle)
Kuyruk Mili	:Acil Durum Otomatik Motor Durdurma Tertibatı
Balata	:İki Adet
Teker Takımı	:Üst Kuyruk Mili Motor Devri Alt Kuyruk Mili Vites Devri
Motor	:Kuru Tip Konik Balata
Motor Tipi	:Opsiyonel (400 x 8)
İlk Hareket	
Silindir Hacmi (cm3)	:Honda GX200
Net Güç	:4 Zamanlı Kafadan Subaplı Tek Silindirli
Net Tork	
Motor Yağ Kapasitesi (lt): İpli	
Yakıt Depo Kapasitesi (lt)	:196 (68.0 X 54.0)
Yakıt Türü	:6.5 Dg / 3600 d/dk
Hava Filtresi	:1.26 Kg-M (12.4 N -M) @ 2500 d/dk
Soğutma Sistemi	:0,6 lt
Ateşleme Sistemi	:3,6 lt
Ağırık	:Kuruşunsuz Benzin
	:Yan Kuru - Yağ Banyolu - Çift Elemanlı
	:Cebri Hava İle
	:Transistörülü Manyeto İle
	:75 kg

Technical Specifications

Serial No	:Yavuz 300 Honda GX200
Transmission and Diff	:Manual 3 forward and 1 reverse Speed
Tiller / Working With	:Conical and Bevel Gear Box
Safety Device	:Adjustable 60-90cm (with the protective side disks
Power take Of	:Motor Stop shuts down the engine immediately
Clutch	:Upper: Fixed speed Lower: Synchronized with gear
Wheels	box :Conical dry type :Optional (400x8) :Honda
Engine	GX200 :4 Stroke Gasoline Engine : Ropc :196 (68.0 X
Engine Type	54.0) :6.5 HP / 3600 rpm :1.26 Kg-M (12.4 N -M) @
Starting System	2500 rpm :0,6 lt :3,6 lt : Gazoline :Semi-dry - Oil bath
Cylinder Volume (cm3)	- double component :Air
Rated Power	
Rated Torque	
Engine oil capacity (ltr)	
Fuel tank capacity (ltr)	
Fuel Type	
Air Filter	
Cooling System	
Ignition System	
Weight	
	: Transistor Ignition
	:75 kg



PARS

PARS



DIESEL
SERIES
300

ÜÇ İLERİ BİR GERİ
ŞANZIMANLI
3 FORWARD and 1 REVERSE SPEED





DIESEL SERIES

300

ÜÇ İLERİ BİR GERİ
ŞANZİMAN

3 FORWARD and 1 REVERSE SPEED

Teknik Özellikler

Seri	:Yavuz 300 AD320
Şanzıman	:3 İleri 1 Geri Vitesli Elle Kumandalı
İş Geniştirliği	:Konik Ve Ayna Dişli İle Aktarmalı
Emniyet Sistemi	:60-90 Cm Ayarlanabilir (Koruyucu Yan Diskler İle)
Kuyruk Mili	:Acil Durum Otomatik Motor Durdurma Tertibatı
Balata	:İki Adet
Teker Takımı	:Üst Kuyruk Mili Motor Devri Alt Kuyruk Mili Vites Devri
Motor	:Kuru Tip Diskli Baskı Balata / Yağlı Yaprak
Motor Tipi	:Opsiyonel (400 x 8 / 450 x 10)
İlk Hareket	
Silindir Hacmi (cm3)	: Antor AD320
Güç Ve Devir	:4 Zamanlı Direk Enjeksiyonlu Tek Silindir
Max Tork	
Motor Yağ Kapasitesi (lt)	:İpli
Yakıt Depo Kapasitesi (lt)	:315 cm3
Yakıt Türü	:7 Bg / 3600 d/dk
Hava Filtresi	:13.8 & 2800 (N Gücünde)
Soğutma Sistemi	: 1.2 lt
Ağırlık	:5 lt
	:Dizel
	:Yağ Banyolu Tip
	:Cebri Hava
	:85 kg

Technical Specifications

Serial No	:Yavuz 300 AD320
Transmission and Diff	:3 Forward and 1 Reverse Speed
Tiller / Working With	:Conical and Bevel Gear Transmission
Safety Device	:Adjustable 60-90cm (with the protective side disks)
Power Take off	:Emergency Engine Stop System
Wheels	:Two each Upper Power Take-off and lower Power Take-off
Engine	:Dry Type Conical Brake Lining
Engine Type	:Optional (400x8 / 450 x10)
Starting Type	: Antor AD320
Cylinder Volume (cm3)	:4 Stroke with Direct Injection
Rated Power	
Rated Torque	
Engine oil capacity (ltr)	:Engine with Single-Cylinder
Fuel tank capacity (ltr)	:Rope
Fuel Type	:315 cm3
Air Filter	:7 HP / 3600 rpm d/dk
Cooling System	:13.8 & 2800 (N Power)
Weight	: 1.2 lt
	:5 lt : Diesel
	:Oil-bath type
	:Air pressured
	:85 kg



adrinpars.com



PARS



PARS

DIESEL SERIES

300

ÜÇ İLERİ BİR GERİ
ŞANZİMAN

Teknik Özellikler 3 FORWARD and 1 REVERSE SPEED

Seri	:Yavuz 300 178 F
Şanzıman	:3 İleri 1 Geri Vitesli
Defransiyel	:Elle Kumandalı
İş Genişliği	:Konik Ve Ayna Dişli İle Aktarmalı
Emniyet Sistemi	:60-90 Cm Ayarlanabilir (Koruyucu Yan Diskler İle)
Kuyruk Mili	:Acil Durum Otomatik Motor Durdurma Tertibatı
Balata	:İki Adet
Teker Takımı	:Üst Kuyruk Mili Motor Devri Alt Kuyruk Mili Vites Devri
Motor	:Kuru Tip Diskli Baskı Balata / Yağlı Yaprak
Motor Tipi	:Opsiyonel (400 x 8 / 450 x 10)
İlk Hareket	:Yavuz 178 F
Silindir Hacmi (cm3)	:4 Zamanlı Direk Enjeksiyonlu Tek Silindir
Güç Ve Devir	
Motor Yağ Kapasitesi (lt)	:İpli
Yakıt Depo Kapasitesi (lt)	:296 cm3
Yakıt Türü	:7 Bg / 3600 d/dk
Hava Filtresi	:1.1 lt
Soğutma Sistemi	:3.5 lt : Dizel :Yağ
Ağırlık	:Banyolu Tip
	:Cebri Hava :85 kg

Technical Specifications

Serial No	:Yavuz 300 178 F
Transmission and Diff	:3 Forward and 1 Reverse Speed
Tiller / Working With	:Conical and Bevel Gear Transmission
Safety Device	:Adjustable 60-90cm (with the protective side disks)
Power Take off	:Emergency Engine Stop System
Clutch	:Two each Upper Power Take-off and lower Power
Wheels	:Take-off
Engine	:Dry Type Conical Brake Lining
Engine Type	:Optional (400x8 / 450x10)
Starting Type	:Yavuz 178 F
Cylinder Volume (cm3)	:4 Stroke with Direct Injection
Rated Power	
Engine oil capacity (ltr)	:Engine with Single-Cylinder
Fuel tank capacity (ltr)	:Rope
Fuel Type	:296 cm3
Air Filter	:7 HP / 3600 rpm d/dk
Cooling System	:1.1 lt
Weight	:3.5 lt : Diesel
	:Oil-bath type
	:Air pressured
	:85 kg



yavuz
178F

adripars.com



DIESEL SERIES

300

ÜÇ İLERİ BİR GERİ
ŞANZİMAN

3 FORWARD and 1 REVERSE SPEED

Teknik Özellikler

Seri	:Yavuz 300 178 FE
Şanzıman	:3 İleri 1 Geri Vitesli
Defransiyel	:Elle Kumandalı
İş Geniřliđi	:Konik Ve Ayna Diđli İle Aktarmalı
Emniyet Sistemi	:60-90 Cm Ayarlanabilir (Koruyucu Yan Diskler İle)
Kuyruk Mili	:Acil Durum Otomatik Motor Durdurma Tertibatı
Balata	:İki Adet
Teker Takımı	:Üst Kuyruk Mili Motor Devri Alt Kuyruk Mili Vites Devri
Motor	:Kuru Tip Diskli Baskı Balata
Motor Tipi	:Opsiyonel (400 x 8 / 450 x 10)
İlk Hareket	:Yavuz 178 FE
Silindir Hacmi (cm3)	:4 Zamanlı Direk Enjeksiyonlu Tek Silindir
Güç Ve Devir	:İpli ve Marşlı
Motor Yađ Kapasitesi (lt)	:296 cm3
Yakıt Depo Kapasitesi (lt)	:7 Bg / 3600 d/dk
Yakıt Türü	
Hava Filtresi	
Sođutma Sistemi	: 1.1 lt
Ađırlık	:3.5 lt : Dizel :Yađ Banyolu Tip :Cebri Hava :100 kg

Technical Specifications

Serial No	:Yavuz 300 178 FE
Transmission and Diff	:3 Forward and 1 Reverse Speed
Tiller / Working With	:Conical and Bevel Gear Transmission
Safety Device	:Adjustable 60-90cm (with the protective side disks)
Power Take off	:Emergency Engine Stop System
Wheels	:Two each Upper Power Take-off and lower Power Take-off
Engine	:Dry Type Conical Brake Lining
Engine Type	:Optional (400x8 / 450 x10)
Starting Type	:Yavuz 178 FE
Cylinder Volume (cm3)	:4 Stroke with Direct Injection
Rated Power	
Engine oil capacity (ltr)	:Engine with Single-Cylinder
Fuel tank capacity (ltr)	:Rope / Recoil / Electrical Start
Fuel Type	:296 cm3
Air Filter	:7 HP / 3600 rpm d/dk
Cooling System	: 1.1 lt
Weight	:3.5 lt : Diesel :Oil-bath type :Air pressured :95 kg



adrinpars.com



PARS



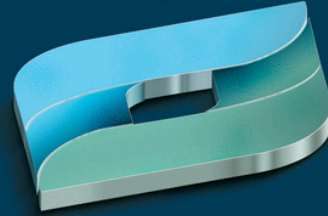
yavuz
178FE

PARS



DIESEL
SERIES
375

ÜÇ İLERİ BİR GERİ
ŞANZIMANLI
3 FORWARD and 1 REVERSE SPEED





DIESEL SERIES

375

ÜÇ İLERİ BİR GERİ ŞANZİMAN

3 FORWARD and 1 REVERSE SPEED

Teknik Özellikler

Seri	:Yavuz 375 / 178F - 178FE
Şanzıman	:3 İleri 1 Geri Vitesli Elle Kumandalı
İş Geniştirliği	:Konik Ve Ayna Dışlı İle Aktarmalı
Emniyet Sistemi	:90-120 Cm Ayarlanabilir (Koruyucu Yan Diskler İle)
Kuyruk Mili	:Acil Durum Otomatik Motor Durdurma Tertibatı
Balata	:İki Adet
Teker Takımı {Opsiyonel}	:Üst Kuyruk Mili Motor Devri Alt Kuyruk Mili Vites Devri
Motor	:Tek Diskli Yaprak Balata
Motor Tipi	:500 x 12
İlk Hareket	
Silindir Hacmi (cm3)	:YAVUZ 178 F - 178 FE
Güç Ve Devir	:4 Zamanlı Enjeksiyonlu Tek Silindir
Max Torq	:İpli ve Marşlı
Motor Yağ Kapasitesi (lt)	:296 cm3
Yakıt Depo Kapasitesi (lt)	:17 Bg / 3600 d/dk
Yakıt Türü	:32.8 @ 1.800 d/dk
Hava Filtresi	
Soğutma Sistemi	: 1.1 lt
Ağırlık	:3.5 lt
	: Dizel
	:Yağ Banyolu Tip
	:Cebri Hava
	:110 ±

Technical Specifications

Serial No	Gear Box	:Yavuz 375 / 178 F - 178 FE
Tiller Safety System		:3 Forward and 1 Reverse Speed
Power Take-off		:Conical and Bevel Gear Transmission
Clutch	Wheels	:Adjustable 60-90cm (with the protective side disks)
{Optional} Engine		:Emergency Engine Stop System
Engine Type	Starting System	:Two each Upper Power Take-off and lower Power Take-off
System	Cylinder	:Dry Type Conical Brake Lining
Volume (cm3)	Power and Rotation	:500 x 12
Effective Torque		:YAVUZ 178 F - 178 FE
Engine oil capacity (ltr)	Fuel tank capacity (ltr)	:4 Stroke with Direct Injection Engine with Single-Cylinder
capacity (ltr)	Fuel Type	:Rope / Recoil / Electrical Start
capacity (ltr)	Air Filter	:400 cm3
Capacity (ltr)	System	:7HP / 3600 rpm d/dk
Weight		:32.8 @ 1800 d/dk
		: 1.1 lt
		:3.5 lt : Diesel
		:Oil-bath type
		:Air pressured
		:110 ±

adrinpars.com



PARS



yavuz



Teknik Özellikler

Seri	:Yavuz 300 ANTOR AD 320
Şanzıman	:3 İleri 1 Geri Vitesli Elle Kumandalı
İş Genişliği	:Konik Ve Ayna Dişli İle Aktarmalı
Emniyet Sistemi	:60-90 Cm Ayarlanabilir (Koruyucu Yan Diskler İle)
Kuyruk Mili	:Acil Durum Otomatik Motor Durdurma Tertibatı
Balata	:İki Adet
Teker Takımı (Opsiyonel)	:Üst Kuyruk Mili Motor Devri Alt Kuyruk Mili Vites Devri
Motor	:Kuru Tip Diskli Baskı Balata
Motor Tipi	:Opsiyonel (500x12)
İlk Hareket	
Silindir Hacmi (cm3)	:ANTOR AD 320
Güç Ve Devir	:4 Zamanlı Direk Enjeksiyonlu Tek Silindir
Max Tork	
Motor Yağ Kapasitesi (lt):	:İpli
Yakıt Depo Kapasitesi (lt):	:315 cm3
Yakıt Türü	:7 Bg / 3600 d/dk
Hava Filtresi	:13.8 & 2800 (N Gücünde)
Soğutma Sistemi	: 1.2 lt
Ağırık	:5 lt
	:Dizel
	:Yağ Banyolu Tip
	:Cebri Hava
	: 100 ±

Technical Specifications

Serial No	:Yavuz 300 AD 320
Transmission and Diff	:3 Forward and 1 Reverse Speed
Tiller / Working With	:Conical and Bevel Gear Transmission
Safety Device	:Adjustable 60-90cm (with the protective side disks)
Power Take off	:Emergency Engine Stop System
Wheels (Optional)	:Two each Upper Power Take-off and lower Power Take-off
	:Dry Type Conical Brake Lining
	:Optional (500x12)
Engine	:ANTOR AD 320
Engine Type	:4 Stroke with Direct Injection
Starting Type	:Engine with Single-Cylinder
Cylinder Volume (cm3)	:Rope / Recoil
Rated Power	:315 cm3
Rated Torque	:7 HP / 3600 rpm d/dk
Engine oil capacity (ltr)	:13.8 & 2800 (N Power)
Fuel tank capacity (ltr)	: 1.2 lt
Fuel Type	:5 lt : Diesel
Air Filter	:Oil-bath type
Cooling System	:Air pressured
Weight	:100 ±



DIESEL SERIES

375

ÜÇ İLERİ BİR GERİ
ŞANZİMAN

3 FORWARD and 1 REVERSE SPEED

Teknik Özellikler

Seri	:Yavuz 375 / 186 FE
Şanzıman	:3 İleri 1 Geri Vitesli Elle Kumandalı
İş Geniştirliği	:Konik Ve Ayna Dişli İle Aktarmalı
Emniyet Sistemi	:90-120 Cm Ayarlanabilir (Koruyucu Yan Diskler İle)
Kuyruk Mili	:Acil Durum Otomatik Motor Durdurma Tertibatı
Balata	:İki Adet
Teker Takımı {Opsiyonel}	:Üst Kuyruk Mili Motor Devri Alt Kuyruk Mili Vites Devri
Motor	:Tek Diskli Yaprak Balata
Motor Tipi	:500x12
İlk Hareket	
Silindir Hacmi (cm3)	: YAVUZ 186 FE
Güç Ve Devir	:4 Zamanlı Enjeksiyonlu Tek Silindir
Max Torque	:İpli ve Marşlı
Motor Yağ Kapasitesi (lt)	:406 cm3
Yakıt Depo Kapasitesi (lt)	:10 Bg / 3600 d/dk
Yakıt Türü	:32.8 @ 1.800 d/dk
Hava Filtresi	:1.65 lt
Soğutma Sistemi	:5.5 lt
Ağırlık	:Dizel :Yağ Banyolu Tip :Cebri Hava :110 kg

Technical Specifications

Serial No	:Yavuz 375 / 186 FE
Tiller Safety System	:3 Forward and 1 Reverse Speed
Power Take-off	:Conical and Bevel Gear Transmission
Clutch	:Adjustable 60-90cm (with the protective side disks)
{Optional} Engine	:Emergency Engine Stop System :Two each Upper
Engine Type	:Power Take-off and lower Power Take-off :Dry Type
Starting System	:Conical Brake Lining : 500x12 : YAVUZ 186 FE :4 Stroke
Volume (cm3)	:with Direct Injection Engine with Single-Cylinder :Rope
and Rotation	/ Recoil / Electrical Start :406 cm3 :10 HP / 3600 rpm
Effective Torque	d/dk :32.8 @ 1800 d/dk :1.65 lt :5.5 lt : Diesel :Oil-bath
Engine oil capacity (ltr)	type :Air pressured :110 kg
Fuel tank capacity (ltr)	
Fuel Filter	
Cooling System	
Weight	



adripars.com



PARS



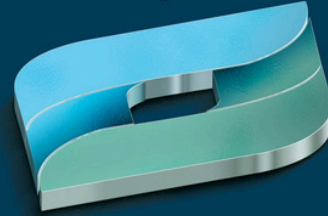
yavuz

PARS



DIESEL
SERIES
510

ÜÇ İLERİ BİR GERİ
ŞANZIMANLI
3 FORWARD and 1 REVERSE SPEED





DIESEL SERIES

510

ÜÇ İLERİ BİR GERİ
ŞANZİMAN

3 FORWARD and 1 REVERSE SPEED

Teknik Özellikler

Seri	:Yavuz 510 Antor 3 LD 510
Şanzıman	:3 İleri 1 Geri Vitesli Elle Kumandalı
İş Geniştirliği	:Konik Ve Ayna Dışlı İle Aktarmalı
Emniyet Sistemi	:90-120 Cm Ayarlanabilir (Koruyucu Yan Diskler İle)
Kuyruk Mili	:Acil Durum Otomatik Motor Durdurma Tertibatı
Balata	:İki Adet
Teker Takımı	:Üst Kuyruk Mili Motor Devri Alt Kuyruk Mili Vites Devri
Motor	:Tek Diskli Yaprak Balata
Motor Tipi	:650 x 80 x 13
İlk Hareket	
Silindir Hacmi (cm3)	:Antor 3 LD 510
Güç Ve Devir	:4 Zamanlı Enjeksiyonlu Tek Silindir
Max Tork	:İpli & Marşlı
Motor Yağ Kapasitesi (lt)	:510 cm3
Yakıt Depo Kapasitesi (lt)	:32.8 @ 1.800 d/dk
Yakıt Türü	:1.75 lt
Hava Filtresi	:5.3 lt
Soğutma Sistemi	:Dizel
Ağırlık	:Yağ Banyolu Tip :Cebri Hava :185 kg

Technical Specifications

Serial No	:Yavuz 510 Antor 3 LD 510
Gear Box	:3 Forward and 1 Reverse Speed
Tiller Safety	:Conical and Bevel Gear Transmission
System Power	:Adjustable 90-120cm (with the protective side disks)
Take-off	:Emergency Engine Stop System
Clutch Wheels	:Two each Upper Power Take-off and lower Power Take-off :Dry Type Conical Brake Lining :650 x 80 x 13

Engine	:Antor 3 LD 510 :4 Stroke Direct Injection Engine
Engine Type	with Single-Cylinder :Rope / Recoil / Electrical
Starting System	Start :510 cm3 :12 HP / 3000 rpm :32.8 & 1.800
Cylinder Volume (cm3)	rpm :1.75 lt :5.3 lt : Diesel :Oil-bath type :Air
Power and Rotation	pressured :185 kg
Effective Torque	
Engine oil capacity (ltr)	
Fuel tank capacity (ltr)	
Fuel Type	
Air Filter	
Cooling System	
Weight	



adripars.com



PARS





Teknik Özellikler

Seri	:Yavuz 510 / 186 FE
Şanzıman	:3 İleri 1 Geri Vitesli Elle Kumandalı
İş Geniştirliği	:Konik Ve Ayna Dişli İle Aktarmalı
Emniyet Sistemi	:90-120 Cm Ayarlanabilir (Koruyucu Yan Diskler İle)
Kuyruk Mili	:Acil Durum Otomatik Motor Durdurma Tertibatı
Balata	:İki Adet
Teker Takımı	:Üst Kuyruk Mili Motor Devri Alt Kuyruk Mili Vites Devri
Motor	:Tek Diskli Yaprak Balata
Motor Tipi	:650x80x12
İlk Hareket	
Silindir Hacmi (cm3)	:YAVUZ 186 FE
Güç Ve Devir	:4 Zamanlı Enjeksiyonlu Tek Silindir
Max Tork	:İpli ve Marşlı
Motor Yağ Kapasitesi (lt)	:418 cm3
Yakıt Depo Kapasitesi (lt)	:10 Bg / 3600 d/dk
Yakıt Türü	:32.8 @ 1.800 d/dk
Hava Filtresi	:1.65 lt
Soğutma Sistemi	:5.5 lt
Ağırık	:Dizel
	:Yağ Banyolu Tip
	:Cebri Hava
	:150 kg

Technical Specifications

Serial No	Gear Box	:Yavuz 510 / 186 FE
Tiller Safety System	Power Take-off	:3 Forward and 1 Reverse Speed
Clutch Wheels	Engine	:Conical and Bevel Gear Transmission
Engine Type	Starting System	:Adjustable 60-90cm (with the protective side disks)
Volume (cm3)	Cylinder	:Emergency Engine Stop System
Effective Torque	Rotation	:Two each Upper Power Take-off and lower Power Take-off
Engine oil capacity (ltr)	oil capacity	:Dry Type Conical Brake Lining
capacity (ltr)	Fuel tank capacity (ltr)	:650x80x12
Type	Air Filter System	:YAVUZ 186 FE
Cooling Weight	System	:4 Stroke with Direct Injection Engine with
		:Single-Cylinder
		:Rope / Recoil / Electrical
		Start :400 cm3 :10 HP / 3600
		rpm d/dk :32.8 @ 1800 d/dk
		:1.65 lt :5.5 lt : Diesel :Oil-
		bath type :Air pressured :150
		kg



PARS

PARS



DIESEL
SERIES
600

ÜÇ İLERİ BİR GERİ
ŞANZIMANLI
3 FORWARD and 1 REVERSE SPEED





DIESEL SERIES

600

ÜÇ İLERİ BİR GERİ
ŞANZIMAN

3 FORWARD and 1 REVERSE SPEED

PARS

Teknik Özellikler

Seri	:Yavuz 600 Yavuz 292F
Şanziman	:3 İleri 1 Geri Vitesli Elle Kumandalı
Emniyet Sistemi	:Konik Ve Ayna Dişli İle Aktarmalı
Kuyruk Mili	:Acil Durum Otomatik Motor Durdurma Tertibatı
Balata	:İki Adet
Teker Takımı	:Üst Kuyruk Mili Motor Devri Alt Kuyruk Mili Vites Devri :Tek Diskli Yaprak Balata :650 x 80 x 13 :Amörtisörlü Disk Frenli 4x4

Motor	:Yavuz 292F
Motor Tipi	:4 Zamanlı Enjeksiyonlu Tek Silindir
İlk Hareket	:Marşlı
Silindir Hacmi (cm3)	:997 cm3
Güç Ve Devir	:22,4 Bg / 3600 d/dk
Max Torq	:32,8 @ 1.800 d/dk
Motor Yağ Kapasitesi (lt)	:2,75 lt
Yakıt Depo Kapasitesi (lt)	:15 lt
Yakıt Türü	:Dizel
Hava Filtresi	:Yağ Banyolu Tip
Soğutma Sistemi	:Hava - Yağ
Ağırlık	:350 kg

Technical Specifications

Serial No	:Yavuz 600 Yavuz 292F
Gear Box	:3 Forward and 1 Reverse Speed
Safety System	:Conical and Bevel Gear Transmission
Power Take-off	:Emergency Engine Stop System
Clutch	:Two each Upper Power Take-off and lower Power Take-off
Wheels	:Dry Type Conical Brake Lining :650 x 80 x 13 4x4 with shock absorber disk resistance

Engine	:Yavuz 292F
Engine Type	:Double Cylinder With Four Stroke, Injection
Starting System	:Electrical Start
Cylinder Volume (cm3)	:997 cm3
Power and Rotation	:22 HP / 3600 rpm
Effective Torque	:32.8 & 1.800 rpm
Engine oil capacity (ltr)	:2.75 lt
Fuel tank capacity (ltr)	:15 lt
Fuel Type	:Diesel
Air Filter	:Oil-bath type
Cooling System	:Air -Oil
Weight	:350 kg



adripars.com

22 HP ÇİFT SİLİNDİR |

yavuz



PARS

DIESEL SERIES

600

ÜÇ İLERİ BİR GERİ
ŞANZİMAN
3 FORWARD and 1 REVERSE SPEED



Teknik Özellikler

Seri	:Yavuz 600 ANTOR 4LD 820
Şanzıman	:3 İleri 1 Geri Vitesli Elle Kumandalı
Emniyet Sistemi	:Konik Ve Ayna Dişli İle Aktarmalı
Kuyruk Mili	:Acil Durum Otomatik Motor Durdurma Tertibatı
Balata	:İki Adet
Teker Takımı	:Üst Kuyruk Mili Motor Devri Alt Kuyruk Mili Vites Devri
Motor	:Tek Diskli Yaprak Balata (Otomotiv Tipi)
Motor Tipi	:650x80x13
İlk Hareket	:ANTOR 4LD 820
Silindir Hacmi (cm3)	:4 Zamanlı Enjeksiyonlu Tek Silindir
Güç Ve Devir	:Marşlı
Max Torque	:817 cm3
Motor Yağ Kapasitesi (lt)	:17 Bg / 3000 d/dk
Yakıt Depo Kapasitesi (lt)	:5 @ 1.600 d/dk
Yakıt Türü	:2.6 lt
Hava Filtresi	
Soğutma Sistemi	
Ağırlık	: 7,2 lt
	: Dizel
	:Yağ Banyolu Tip
	:Cebri Hava
	:210 kg

Technical Specifications

Serial No	Gear Box	:Yavuz 600 ANTOR 4LD 820
Safety System	Power	:3 Forward and 1 Reverse Speed
Take-off	Clutch	:Conical and Bevel Gear Transmission
Wheels	Engine	:Emergency Engine Stop System
Engine Type	Starting System	:Two each Upper Power Take-off and lower Power Take-off
Volume (cm3)	Power and Rotation	:Dry Type Conical Brake Lining
Effective Torque		:650x80x13
Engine oil capacity (ltr)	Fuel tank capacity (ltr)	:ANTOR 4LD 820
Type	Air Filter System	:4 Stroke with Direct Injection Engine with Single-Cylinder
Cooling		:Electrical Start
Weight		:817 cm3
		:17 HP / 3000 rpm d/dk
		:5 @ 1600 d/dk
		:2.6 lt
		: 7,2 lt
		: Diesel :Oil-bath type :Air pressured
		:210 kg



| 17 HP KALIN KOVAN

adrinpars.com



DIESEL SERIES

600

ÜÇ İLERİ BİR GERİ
ŞANZİMAN

3 FORWARD and 1 REVERSE SPEED

PARS

Teknik Özellikler

Seri	:Yavuz 600 ANTOR 4LD 820
Şanzıman	:3 İleri 1 Geri Vitesli Elle Kumandalı
Emniyet Sistemi	:Konik Ve Ayna Dişli İle Aktarmalı
Kuyruk Mili	:Acil Durum Otomatik Motor Durdurma Tertibatı
Balata	:İki Adet
Teker Takımı	:Üst Kuyruk Mili Motor Devri Alt Kuyruk Mili Vites Devri :Tek Diskli Yaprak Balata (Otomotiv Tipi) :650x80x13 :Amörtisörlü Disk Frenli 4x4

Motor	:ANTOR 4LD 820
Motor Tipi	:4 Zamanlı Enjeksiyonlu Tek Silindir
İlk Hareket	:İpli ve Marşlı
Silindir Hacmi (cm3)	:817 cm3
Güç Ve Devir	:17 Bg / 3000 d/dk
Max Torq	:5 @ 1.600 d/dk
Motor Yağ Kapasitesi (lt)	:2,6 lt
Yakıt Depo Kapasitesi (lt)	:7,2 lt
Yakıt Türü	:Dizel
Hava Filtresi	:Yağ Banyolu Tip
Soğutma Sistemi	:Cebri Hava
Ağırlık	:380 kg

Technical Specifications

Serial No	:Yavuz 600 ANTOR 4LD 820
Gear Box	:3 Forward and 1 Reverse Speed
Safety System	:Conical and Bevel Gear Transmission
Power Take-off	:Emergency Engine Stop System
Clutch	:Two each Upper Power Take-off and lower Power Take-off
Wheels	:Dry Type Conical Brake Lining :650x80x13

4x4 with shock absorber disk resistance

Engine	:ANTOR 4LD 820
Engine Type	:4 Stroke with Direct Injection Engine with
Starting System	:Single-Cylinder
Cylinder Volume (cm3)	:Rope / Recoil / Electrical Start
Power and Rotation	:817 cm3
Effective Torque	:17 HP / 3000 rpm d/dk
Engine oil capacity (ltr)	:5 @ 1600 d/dk
Fuel tank capacity (ltr)	:2,6 lt
Fuel Type	:7,2 lt
Air Filter	:Diesel :Oil-
Cooling System	bath type :Air
Weight	pressured :380 kg



adrinpars.com



17 HP |





Teknik Özellikler

Seri	:Yavuz Y 600 14HP
Şanzıman	:3 İleri 1 Geri Vitesli Elle Kumandalı
Emniyet Sistemi	:Konik Ve Ayna Dişli İle Aktarmalı
Kuyruk Mili	:Acil Durum Otomatik Motor Durdurma Tertibatı
Balata	:İki Adet
Teker Takımı	:Üst Kuyruk Mili Motor Devri Alt Kuyruk Mili Vites Devri
Motor	:Tek Diskli Yaprak Balata (Otomotiv
Motor Tipi	Tipi) : 650x80x13 :Y 600 14HP :4
İlk Hareket	:Zamanlı Enjeksiyonlu Tek Silindir :İpli
Silindir Hacmi (cm3)	ve Marşlı :660 cm3 :14 Bg / 3000 d/dk
Güç Ve Devir	:5 @ 1.600 d/dk :2.6 lt
Max Tork	
Motor Yağ Kapasitesi (lt)	: 7,2 lt
Yakıt Depo Kapasitesi (lt)	: Dizel
Yakıt Türü	:Yağ Banyolu Tip
Hava Filtresi	:Cebri Hava
Soğutma Sistemi	:210 kg
Ağırlık	

Technical Specifications

Serial No	:Yavuz Y 600 14HP
Gear Box	:3 Forward and 1 Reverse Speed
Safety System	:Conical and Bevel Gear Transmission
Power Take-off	:Emergency Engine Stop System
Clutch	:Two each Upper Power Take-off and lower Power
Wheels	Take-off
Engine	:Dry Type Conical Brake Lining :
Engine Type	650x80x13 :Y 600 14HP :4 Stroke with
Starting System	Direct Injection Engine with
Cylinder	
Volume (cm3)	
Power and Rotation	
Effective Torque	
Engine oil capacity (ltr)	: 7,2 lt
Fuel tank capacity (ltr)	: Diesel :Oil-bath type :Air pressured
Fuel Filter	:210 kg
Air Filter System	
Cooling System	
Weight	



P A R S

PARS



DIESEL
SERIES
600 S

ÜÇ ve İKİ İLERİ İKİ GERİ
ŞANZIMANLI
3-2 FORWARD and 2 REVERSE SPEED





DIESEL SERIES

600 S

İKİ İLERİ İKİ GERİ
ŞANZİMAN

2 FORWARD and 2 REVERSE SPEED

PARS

Teknik Özellikler

Seri	:Yavuz 600S / 178 FE
Şanzıman	:2 İleri 2 Geri Vitesli Elle Kumandalı
Emniyet Sistemi	Konik Ve Ayna Dişli İle Aktarmalı
Kuyruk Mili	:Acil Durum Otomatik Motor Durdurma Tertibatı
Balata	: Tek
Teker Takımı	:Tek Diskli Yaprak Balata (Kendinden Soğutmalı)
Bıçak Boyutu	: İtalyan Tipi
Motor	:500x10 - Difransiyel Kilitli
Motor Tipi	:120 cm Çift Bıçak
İlk Hareket	
Silindir Hacmi (cm3)	:YAVUZ 178 FE
Güç Ve Devir	:Hava Soğutmalı
Motor Yağ Kapasitesi (lt)	:Marşlı
Yakıt Depo Kapasitesi (lt)	:296 cm3
Yakıt Türü	:7 Bg / 3600 d/dk
Hava Filtresi	
Soğutma Sistemi	: 1.1 lt
Ağırlık	:3.5 lt
	: Dizel
	:Yağ Banyolu Tip
	:Cebri Hava
	:140 kg

Technical Specifications

Serial No	Gear Box	:Yavuz 600 / 178 FE
Safety System	Power	:2 Forward and 2 Reverse Speed
Take-off	Clutch	Conical and Bevel Gear Transmission
Wheels	(Optional)	:Emergency Engine Stop System
Blade Size	Engine	:Two each Upper Power Take-off and lower Power Take-off
Engine Type	Starting System	:Dry Type Conical Brake Lining (Self-Cooling)
Volume (cm3)	Cylinder	Italian Type
and Rotation	Engine	:500x10 - Differential Locked
oil capacity (ltr)	Fuel tank capacity (ltr)	:120 cm Double Blade
Fuel tank capacity (ltr)	Fuel Type	:YAVUZ 178 FE
Fuel Type	Air Filter	:4 Stroke with Direct Injection Engine with
Cooling System	Weight	Single-Cylinder
		:Electrical Start
		:296 cm3
		:7 HP / 3600 rpm d/dk
		: 1.1 lt
		:3.5 lt : Diesel
		:Oil-bath type
		:Air pressured
		:140 kg



adripars.com



17 HP |

**Teknik Özellikler**

Seri	:Yavuz 600S 178 FE / 186 FE
Şanzıman	:3 İleri 2 Geri Vitesli Elle Kumandalı
Emniyet Sistemi	:Konik Ve Ayna Dişli İle Aktarmalı
Balata	:Acil Durum Otomatik Motor Durdurma Tertibatı
Çapa Boyutu	:Tek Diskli Yaprak Balata (Kendinden Soğutmalı)
Teker Takımı	:İtalyan Tipi
Motor	:65cm
Motor Tipi	:500-10
İlk Hareket	:Yavuz 178 FE / 186 FE
Silindir Hacmi (cm3)	:Hava Soğutmalı / Marşlı
Güç Ve Devir	:Marşlı
Motor Yağ Kapasitesi (lt)	:817 cm3
Yakıt Depo Kapasitesi (lt)	:7 - 10 Bg / 3600 d/dk
Yakıt Türü	
Hava Filtresi	:1.1 lt
Soğutma Sistemi	:3.5 lt : Dizel :Yağ
Ağırlık	:Banyolu Tip
	:Cebri Hava :140
	kg

Technical Specifications

Serial No	Gear Box	:Yavuz 600S 178 FE / 186 FE
Safety System	Power	:3 Forward and 2 Reverse Speed
Take-off	Clutch	:Conical and Bevel Gear Transmission
Anchor Size	Wheels	:Emergency Engine Stop System
Engine	Engine Type	:Two each Upper Power Take-off and lower Power
Starting System	Volume	:Take-off
Cylinder	Volume	:Dry Type Conical Brake Lining (Self-Cooling)
(cm3)	Power and	:Italian Type
Rotation	Engine oil	:65 cm
capacity (ltr)	fuel	:500-10
capacity (ltr)	capacity (ltr)	:Yavuz 178 FE / 186 FE
Fuel Type	Air Filter	:4 Stroke with Direct Injection Engine with
Cooling System	System	
Weight		:Single-Cylinder
		:Electrical Start
		:817 cm3
		:7 - 10 HP / 3600 rpm d/dk
		:1.1 lt
		:3.5 lt : Diesel
		:Oil-bath type
		:Air pressured
		:140
		kg



DIESEL SERIES

600 S

İKİ İLERİ İKİ GERİ
ŞANZİMAN

2 FORWARD AND 2 REVERSE SPEED

Teknik Özellikler

Seri	:Yavuz 600S 178 FE / 186 FE
Şanzıman	:2 İleri 2 Geri Vitesli Elle Kumandalı
Emniyet Sistemi	:Konik Ve Ayna Dişli İle Aktarmalı
Balata	:Acil Durum Otomatik Motor Durdurma Tertibatı
İş Geniştirliği / Yükseklik	:Tek Diskli Yaprak Balata (Kendinden Soğutmalı)
Teker Takımı	:İtalyan Tipi
Motor	:100 cm / 50 cm
Motor Tipi	:500x10
İlk Hareket	:Yavuz 178 FE / 186 FE
Silindir Hacmi (cm3)	:4 Zamanlı Enjeksiyonlu Tek Silindir
Güç Ve Devir	:Marşlı
Motor Yağ Kapasitesi (lt)	:817 cm3
Yakıt Depo Kapasitesi (lt)	:7 - 10 Bg / 3600 d/dk
Yakıt Türü	
Hava Filtresi	: 1.1 lt
Soğutma Sistemi	:3.5 lt : Dizel :Yağ
Ağırlık	:Banyolu Tip
	:Cebri Hava :160
	kg

Technical Specifications

Serial No	:Yavuz 600S 178 FE / 186 FE
Gear Box	:2 Forward and 2 Reverse Speed
Safety System	:Emergency Engine Stop System
Power	:Two each Upper Power Take-off and lower Power
Take-off	:Take-off
Clutch	:Conical and Bevel Gear Transmission
Working	:Dry Type Conical Brake Lining (Self-Cooling)
Width/Height	:Italian Type
Wheels	:100 cm / 50 cm
Engine	:500x10
Engine Type	:Yavuz 178 FE / 186 FE
Starting System	:4 Stroke with Direct Injection Engine with
Cylinder Volume	:Single-Cylinder
(cm3)	:Rope / Recoil / Electrical Start
Power and	:817 cm3
Rotation	:7 - 10 HP / 3600 rpm d/dk
Engine oil	: 1.1 lt
capacity (ltr)	:3.5 lt : Diesel
Fuel tank capacity (ltr)	:Oil-bath type
Fuel	:Air pressured
Type	:160
Air Filter	
System	
Weight	



adrinpars.com



PARS



PARS

|||
SERIES
DMR
DOLAPLI MİNİ
RÖMORK
MINI TRAILER

Teknik Özellikler

Ağırlık	: 90 kg.
Kapasite	: 200 - 250 kg.
Fren	: Brakes
Uzunluk	: 235 cm
Derinlik	: 26 cm
İç Hacim	: 90x115 cm
Dıştan Dışa	: 96x124 cm
Teker Takımı	: 400x8

Technical Specifications

Weight	: 90 kg.
Carrying Capacity	: 200 - 250 kg.
Brakes	: Brakes
Length	: 235 cm
Deep	: 26 cm
Truck	: 90x115 cm
Width	: 96x124 cm
Wheels	: 400x8



adripars.com



III SERIES YSM

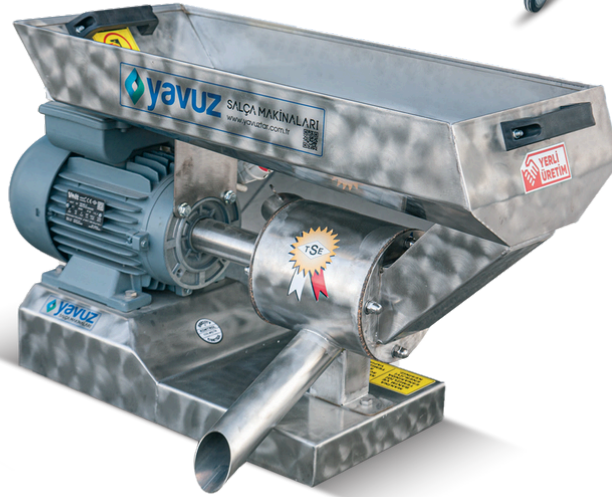
YAVUZ SALÇA MAKİNASI TOMATO PASTE MACHINE

Teknik Özellikler

Ağırlık	: 28 kg :500-750 kg/s
Kapasite	:80 cm :30 cm :50 cm
Uzunluk	:220 V / 3 hp :304
En	Paslanmaz Çelik
Yükseklik	
Motor Gücü	
Malzeme Yapısı	

Technical Specifications

Weight	:28 kg :500-750
Capacity	kg/s :80 cm :30 cm
Length	:50 cm :220 V / 3 hp
Wide	:304 Stainless Steel
Height	
Power of Engine	
Material Structure	



adripars.com

PARS

PARS

HIGH
PERFOR
MANCE




PARS



PARS

**Adrin Pars
Endüstriyel Makina Tasarım
San. Ve Tic. Ltd. Şti**

 **0362 503 55 05**

 **0532 768 80 87**

**19 Mayıs Mahallesi 685.Sk No:15/B
Tekkeköy / Samsun**